

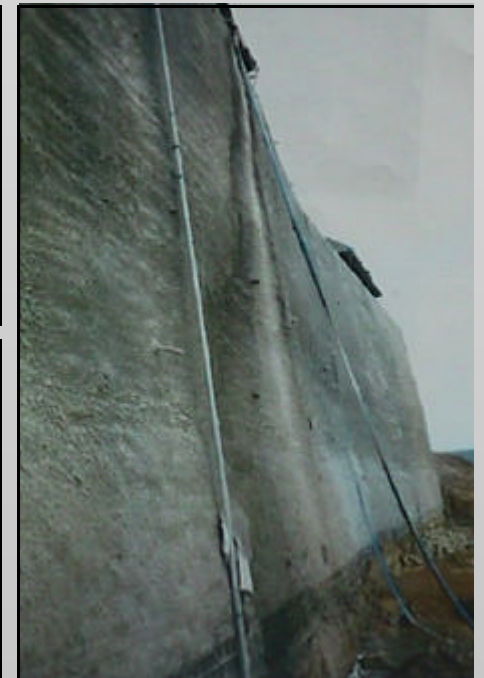


Phuket Yacht Haven – Gunitite Slope Stabilization



Following slope vegetation clearance, soil trimming, benching and the installation of approx. 2,000 number 9.0–12.0m long soil nails, 200 mm of reinforced shotcrete was applied to the 15m high slope surface by the dry spray or “Gunitite” process.

All final surface trimming and profiling, reinforcing steel fixing and shotcrete works were carried out by skilled Hammersmith operatives.



**“SPECIALIST SOLUTIONS
FOR THE
CONSTRUCTION INDUSTRY”**

HAMMERSMITH LIMITED

38/1 Soi Naphasap Yak 1 Sukhumvit Soi 36,

Klongtoey, Bangkok 10110 THAILAND

Phone: (662) 661 5962/3

Fax: (662) 661 5986

Email: email@hammersmithgroup.com

Web: www.hammersmithgroup.com

PROJECT DETAILS

Project Title

Phuket Yacht Haven – Slope Stabilization

Client

Thai Leighton

Project Details

2,500 m² of 150mm thick Shotcrete (by the dry spray process) to soil nailed slope

Duration

Seven months

Completion Date

October, 1998