



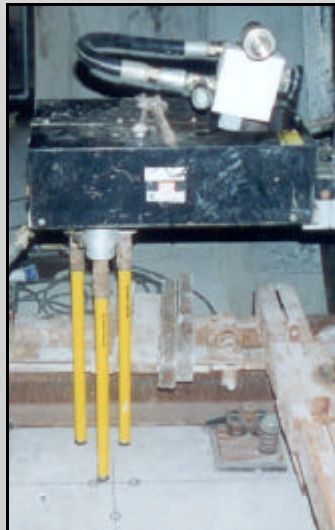
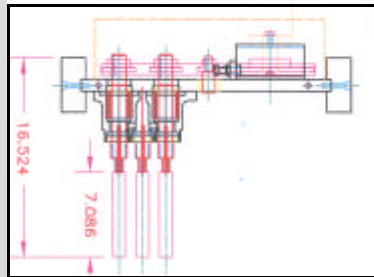
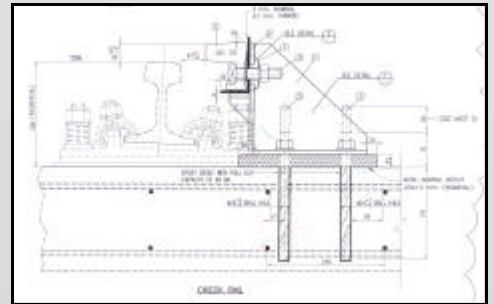
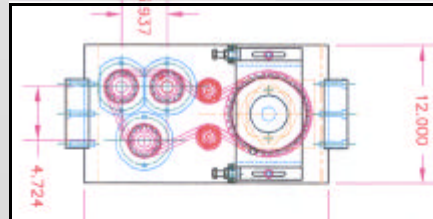
Multi Spindle Core Drilling – Bangkok MRTA

The extremely precise core drilling of over 17,300 base plate anchor bolt holes in a fixed triangular drill pattern was the task set Hammersmith by MRT track work contractor CKSL.

The additional requirement that all core drilling works and the installation of stud bolts to a +/- 2.0mm tolerance was to be completed within a 12 week period demanded an innovative solution from Hammersmith.

In order to meet the contract requirements Hammersmith mobilized three hydraulically powered multi spindle drill rigs to site and were able to achieve an output of in excess of 200 number. 180 mm x 28 mm diameter core holes per rig, per day.

The use of purpose build setting and holding jigs combined with the 2 hour setting characteristics of the selected epoxy system allowed for the accurate placing and holding of the stud bolts to achieve the final tolerance.



**“THE LEADERS IN
DIAMOND CUTTING
TECHNOLOGY”**

HAMMERSMITH LIMITED

38/1 Soi Naphasap Yak 1 Sukhumvit Soi 36,
Klongtoey, Bangkok 10110 THAILAND

Phone: (662) 661 5962/3

Fax: (662) 661 5986

Email: email@hammersmithgroup.com

Web: www.hammersmithgroup.com

PROJECT DETAILS

Project Title	Guard Rail and Guide Rail Stud Bolt Installation, MRT Chaloem Ratchamongkhon Line
Client	CKSL Joint Venture
Details	Core drilling 17,300 No. 180mm x 28mm diameter holes and the installation of anchor bolts in epoxy grout
Completion	July 2002