



CAPABILITY STATEMENT

2
0
2
3

Providing Specialist Technical Solutions To
Discerning Clients Since 1995



TABLE OF CONTENTS

1

Table of Contents

2

Message From The MD

3

Our Services

4

Who We Are

5

Specialist Construction Services

6

Proven Track Record

7

Project References

8

Project References (cont.)

9

Brands We Represent

10

Brands We Represent (cont.)

11

Our Team

12

Contact Us



MESSAGE FROM THE MANAGING DIRECTOR



"Our mission at Hammersmith is to utilise our 27 years of experience to deliver innovative solutions and exceptional service to our discerning and prestigious clients. We are committed to staying at the forefront of technology, constantly evaluating and integrating the latest solutions to meet the evolving needs of our clients.

Our success is built on the loyalty and dedication of our staff, and we prioritize their growth and development through ongoing training and support. By fostering a culture of teamwork and collaboration, we ensure that every member of our team is invested in our clients' success.

As we look to the future, we are dedicated to expanding the reach and scope of our solutions portfolio, bringing our expertise to new industries and markets. We are driven by a passion for excellence and a commitment to delivering measurable value to our clients.

At Hammersmith we believe that our clients deserve nothing less than the very best. That is why we are dedicated to delivering exceptional service, innovative solutions, and unrivaled value, every day."



OUR SERVICES

Hammersmith Limited was established in Bangkok in 1995 to provide high quality, professional, specialty contracting services to both the construction industry and the private sector. The company's aim has always been to assure clients of the utmost attention to every detail from the provision of professional, technically precise proposals to the adherence to the fundamental principles of good working practice on site.

Our staff have in-depth knowledge and many years of practical experience founded in the repair and refurbishment sectors and bring these core values to every project.

Essential to our success has been our ability to understand problems and provide long term solutions. This understanding of a clients needs allows us to maintain our superior service in all fields.



WHO WE ARE

At Hammersmith, we are committed to bring a higher level of expertise through:

- Detailed planning with proper resource allocation to deliver a project on time and within budget.
- Continuous value engineering and risk review of all elements of the project process
- Added value through technical and commercial innovation.
- In-depth investigation and accurate diagnosis to provide appropriate solutions
- Full technical support from our preferred material supply partners together with fully warranted products and services
- Intense site supervision
- Strict adherence to the specification and attention to detail
- Thorough preparation, correct application and regular inspection
- Directly employed fully trained site operatives

SPECIALIST CONSTRUCTION SERVICES



The need to understand and respect the many technically advanced materials and techniques used in today's construction industry is of paramount importance when considering intelligent and cost-effective solutions in both new-build and repair situations. The ability to respond quickly and effectively to a client's requirements, be that with traditional specialist construction techniques or new ideas and alternative solutions, is vital when fulfilling a specialist service role.

At Hammersmith, we pride ourselves in being abreast of the constantly changing technology in our field. Regularly expanding and adding to our database of materials, equipment and techniques, offering both tried and tested, and state-of-the-art solutions in a multitude of specialist disciplines.

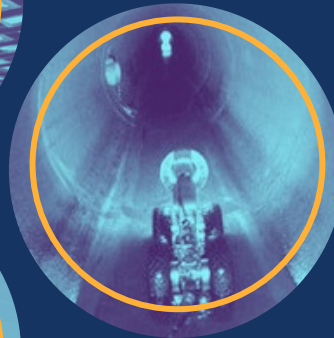
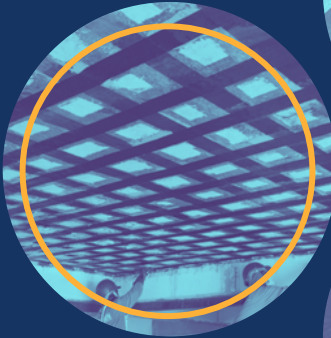
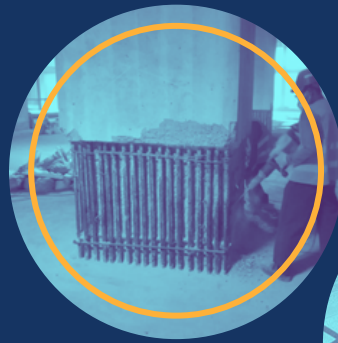


Providing Specialist Technical Solutions To
Discerning Clients Since 1995



PROVEN TRACK RECORD

We offer proven solutions and an extensive track record in the fields of:



Traditional Concrete and Structural Repair

Waterproofing, Leak Detection & Repair

Traditional and CFRP Structural Strengthening

Specialist New Build and Remedial Roofing Solutions

Concrete Drilling, Cutting & Controlled Demolition

Industrial Flooring

Trenchless Pipe Rehabilitation and Installation

Acoustic Enhancement Solutions

Height Safety Products

Ground Penetration Radar (GPR) Concrete Scanning

CCTV Pipe Surveying and Mapping

Advanced Swimming Pool Lining Systems

Drone Assisted Facade Inspections and Surveys

Bespoke Specialist Construction Solutions

Providing Specialist Technical Solutions To Discerning Clients Since 1995



KEY PROJECT REFERENCES

Impact Arena (Roofing)

The 80,000m² Impact Challenger re-roofing project carried out by Hammersmith in 2007 and still remains the largest Sarnafil roof installation in South East Asia.



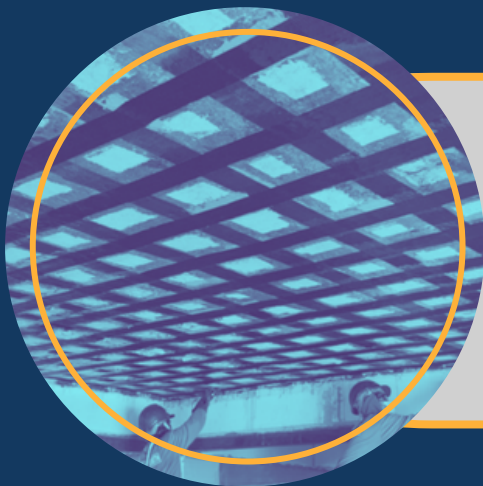
Kelloggs Snack Plant (Roofing)

Due to rain water ingress from the roof contaminating food lines, 13,000m² of especially made, profiles EPS insulation was fully bonded to the existing roof panels and re-waterproofed with fully bonded Sarnafil PVC membrane.

5 Star Resort (Specialist Concrete Repairs)

All coastline properties will be under constant attack from the exposure to chlorides in the air.

This prestigious island resort has undertaken an extensive, proactive repair programme to ensure the continued resilience of their asset in this harsh environment.



Roof Slab (Carbon Fibre Strengthening)

Approximately 180lm of Horse HM 1.2T CFRP Laminate and 2,000lm of HM 30 CFRP Fabric Wrap Strips were installed to strengthen the roof slab structure of the penthouse apartment of this 36 year old building in Central Bangkok.



KEY PROJECT REFERENCES (CONT.)

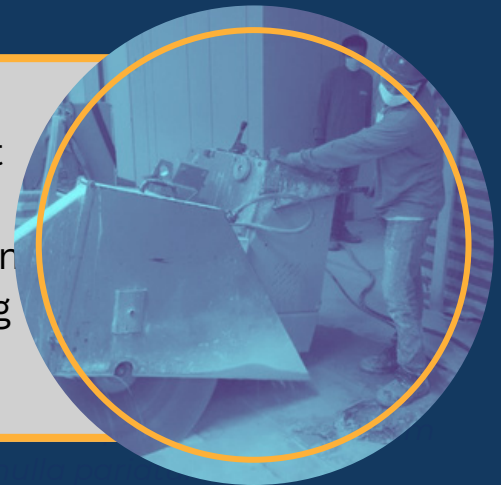
Phuket Hotel Foundation (Rock Bursting)

The ability to split bed rock into manageable pieces for removal from site was the key to the success of this project. Equally the process needed to be non disruptive to the hotel and nearby residences. We were able to remove some 1,200m³ of hard granite in a 8 week period via the utilisation of specialist hydraulic process.



Eastern Sea Board Factory (CCTV Survey)

This long established MNC food production plant required, as part of their global maintenance policy, the mapping and surveying of their underground waste water pipe network. Upon completion, the report highlighted the areas of degradation and repair required, after which a clear repair and rehabilitation programmes and budget was proposed.



Bank Vault Removal (Cutting & Drilling)

The demolition and removal of the existing cash vault was an integral part of the total refurbishment of the head office branch of Standard Chartered Nakornthorn Bank. Within the four week contract period all existing finishes were stripped out, the vault door “surgically” removed for re-used



New Australian Embassy, Bangkok (Basement Waterproofing)

Approximately 11,000m² of Preprufe Composite Sheet Waterproofing Membrane was applied to the external face of the basement slab and walls. Skill, experience, patience and precision was paramount to success when negotiating such complex geometrical profiles.

BRANDS WE REPRESENT

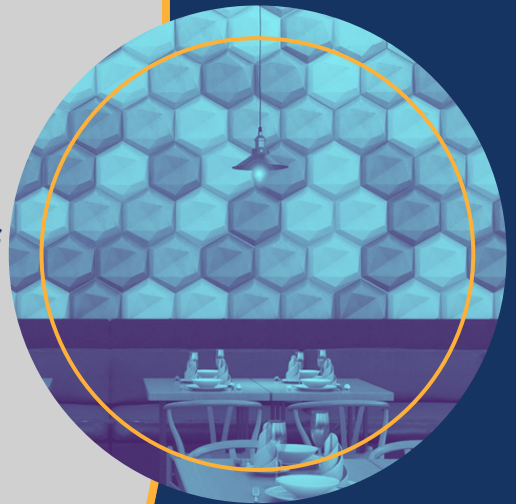


Fallprotec has innovation in its DNA and continuously invests into product development which enables the company to market a comprehensive range, of **fall arrest and height safety systems**.



Designing a better sounding daily life. At CSR Martini, we design environments through **acoustics enhancement solutions** that transform the collective experiences of those within them.

Whether it be the spaces where we work, to the spaces where we learn and listen, we better daily life and wellbeing, advancing focus and enhancing learning by auditory enjoyment.

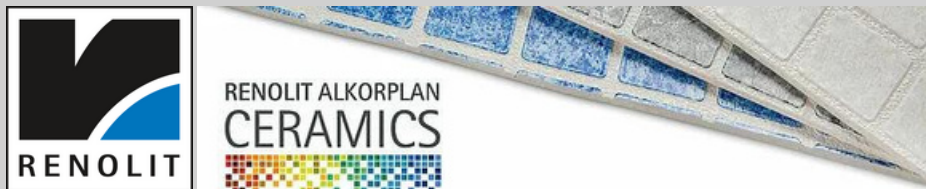
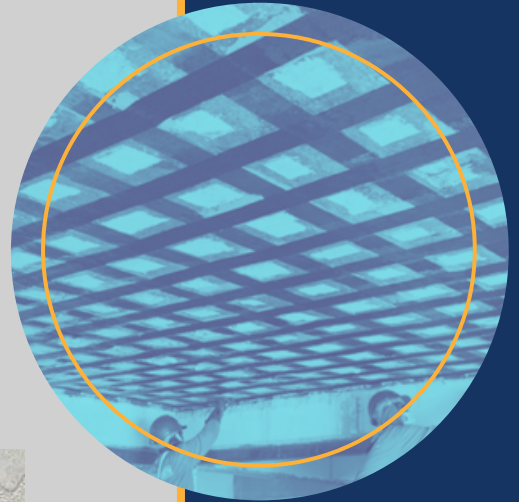


BRANDS WE REPRESENT (CONT.)



HORSE

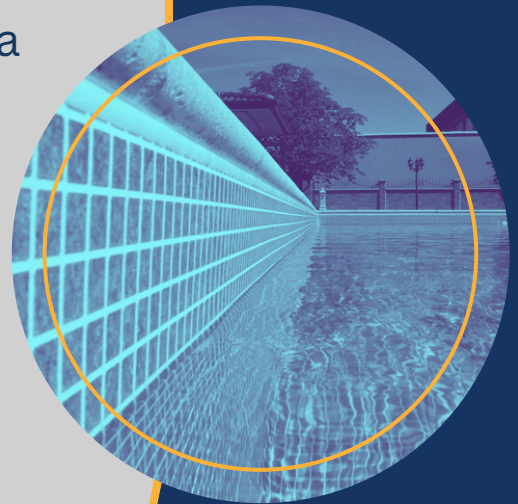
Horse CFRP wrap is a high strength unidirectional carbon fiber wrap pre-saturated to form a **carbon fiber reinforced polymer (CFRP)** wrap used to repair and strengthen structural concrete elements.



Rely on it.

The on site lining RENOLIT ALKORPLAN is a **decorative and watertight reinforced membrane** or liner for swimming pools.

It is made up of two flexible sheets of polyvinyl chloride (PVC-P), providing the pool with total, long-lasting and watertightness.





OUR TEAM

Martin Hodgson

Managing Director

E: martinhodgson.hammersmith@gmail.com

M: +66 (0) 81617 2139

Angelo Bossi

Financial Controller

E: angelo@hammersmithgroup.com

M: +66 (0) 81988 2390

Jaymes Khell

Business Development Manager

E: jaymes.hammersmithgroup@gmail.com

M: +66 (0) 82855 9775

Varinthorn Rottanawit

Construction Manager

E: mitrrk2519@gmail.com

M: 089771 2859

Somjit Konrang

Project Manager

E: somjit@hammersmithgroup.com

M: 090247 1024



CONTACT US

HAMMERSMITH LIMITED
171 Ladprao 26, Ladprao Road,
Chompol, Chatuchak,
Bangkok, 10900, Thailand

T: +66 2 512 3480-02

F: +66 2 512 3483

www.hammersmithgroup.com

email@hammersmithgroup.com



Website



LinkedIn
Company
Page

Providing Specialist Technical Solutions To
Discerning Clients Since 1995