

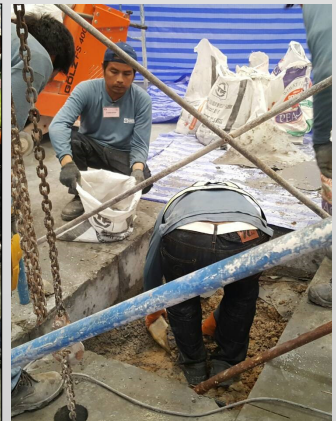
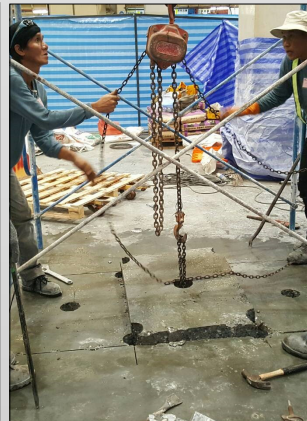
PROJECT REFERENCE



MACHINE PIT CUTTING AND CONSTRUCTION- TRIUMPH MOTORCYCLES

When introducing new equipment into an existing production line the minimization of downtime is of vital importance.

The 48 hour turnaround achieved by the Hammersmith team, combined with the use of high early strength pre-bagged concrete, allowed for the almost seamless introduction of essential new equipment in this motorcycle assembly line



**"SPECIALIST SOLUTIONS
FOR THE
CONSTRUCTION INDUSTRY"**

HAMMERSMITH LIMITED

171 Soi Lad Prao 26, Ladprao Road
Chompol, Chatuchak,
Bangkok, 10900, THAILAND
Phone: (+66 81 617 2139)
Email: email@hammersmithgroup.com
Web: www.hammersmithgroup.com