

PROJECT REFERENCE



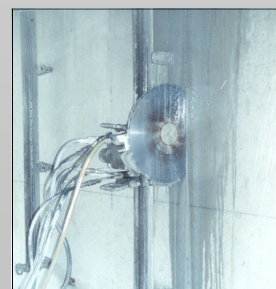
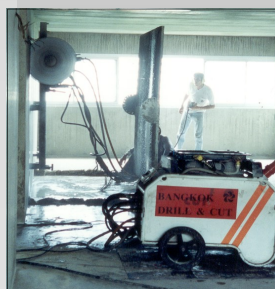
FORMING NEW DOOR OPENINGS BY WALL SAWING—MOANG THON THANI

The forming of 450 door openings was contracted to Hammersmith based on an actual “time and motion” study carried out by the main contractor.

“When all cost aspects of traditional demolition were considered, including the actual repair works required before the opening was acceptable, wall sawing was simply more economical.”

This combined with the fact that the Hammersmith team were able to completely remove an average of eight openings per day (allowing immediate installation of door frames) the selection of the advanced technological solution was never in doubt.

(Note: Blade guard removed for photographic purposes only)



**“SPECIALIST SOLUTIONS
FOR THE
CONSTRUCTION INDUSTRY”
HAMMERSMITH LIMITED**

171 Soi Ladprao 26 , Ladprao Road,
Chompol, Chatuchak, Bangkok 10900
THAILAND

Phone: (662) 512-3480-2

Fax: (662) 512-3483

Email: email@hammersmithgroup.com

Web: www.hammersmithgroup.com

PROJECT DETAILS

Project Title	Wall Sawing of Door Openings – Unit 14 Muang Thong Thani
Client	Bouyges Thai Ltd.
Project Details	Total cut surface area 495 m ²
Equipment	Boart Longyear 600mm blades specifically designed for cutting lightly reinforced “tilt-up” concrete panels
Completion Date	September, 1998