

PROJECT REFERENCE

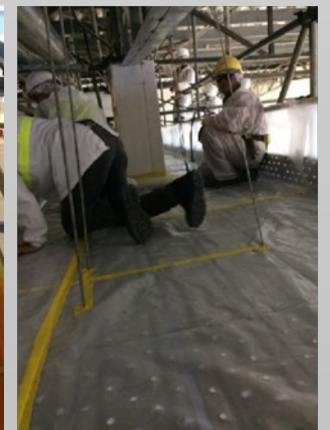
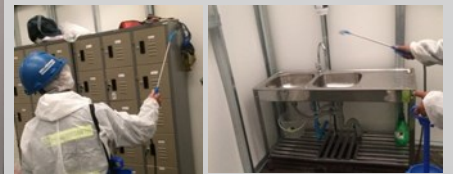


KELLOG RTEC ROOF STRENGTHENING - CONTAINMENT AND HYGIENE

The proposed Implementation Plan was rigorously enforced and followed during the total 20 day production shut down at this Rayong plant.

All entry and egress from the plant was via the specially constructed Transition Areas with secondary controlled access between warehouse, production and raw food zones.

Hammersmith constructed all transition rooms, carried out secondary containment and provided scaffold access for some 80-100 shutdown maintenance workers.



HAMMERSMITH LIMITED

171 Soi Ladprao 26 , Ladprao Road,
Chompol, Chatuchak, Bangkok 10900
THAILAND

Phone: (662) 512-3480-2

Fax: (662) 512-3483

Email: email@hammersmithgroup.com

Web: www.hammersmithgroup.com